

Cynomolgus/Rhesus macaque Her3/ErbB3 Protein

Cat. No. HER-CM403

Description

Source	Recombinant Cynomolgus/Rhesus macaque Her3/ErbB3 Protein is expressed from HEK293 with His tag at the C-Terminus. It contains Ser20-His641.
Accession	XP_005571238.1(Cynomolgus) / G7N7B1(Rhesus macaque)
Molecular Weight	The protein has a predicted MW of 69.54 kDa. Due to glycosylation, the protein migrates to 85-105 kDa based on Bis-Tris PAGE result.
Endotoxin	Less than 1EU per µg by the LAL method.
Purity	> 95% as determined by Bis-Tris PAGE > 95% as determined by HPLC

Formulation and Storage

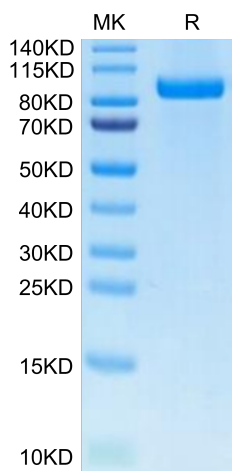
Formulation	Lyophilized from 0.22µm filtered solution in PBS (pH 7.4). Normally 8% trehalose is added as protectant before lyophilization.
Reconstitution	Centrifuge the tube before opening. Reconstituting to a concentration more than 100 µg/ml is recommended. Dissolve the lyophilized protein in distilled water.
Storage	-20 to -80°C for 12 months as supplied from date of receipt. -80°C for 3 months after reconstitution. Recommend to aliquot the protein into smaller quantities for optimal storage. Please minimize freeze-thaw cycles.

Background

Her3, also called ErbB3, is a type I membrane glycoprotein that is a member of the ErbB family of tyrosine kinase receptors. Her3 is expressed in keratinocytes, melanocytes, skeletal muscle cells, embryonic myoblasts and Schwann cells. Monomeric Her3 serves as a low affinity receptor for the heregulins (HRG).

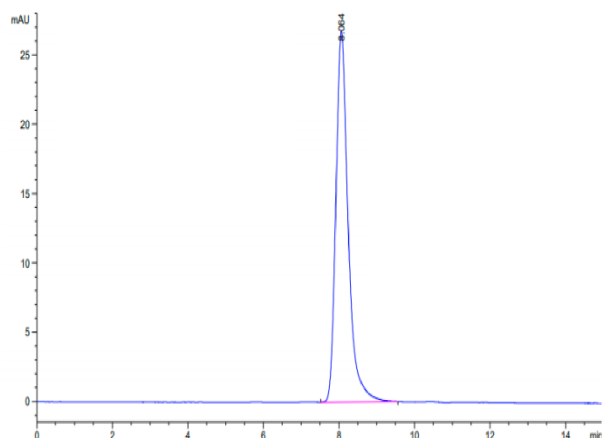
Assay Data

Bis-Tris PAGE



Cynomolgus/Rhesus macaque Her3 on Bis-Tris PAGE under reduced condition. The purity is greater than 95%.

SEC-HPLC

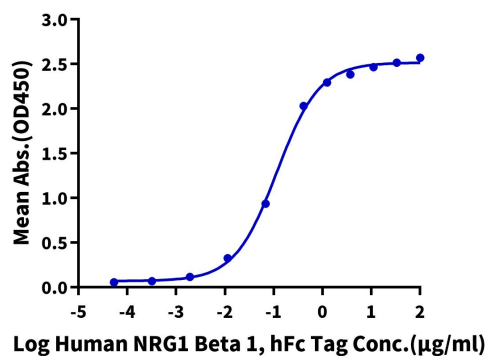


The purity of Cynomolgus/Rhesus macaque Her3 is greater than 95% as determined by SEC-HPLC.

Assay Data

ELISA Data

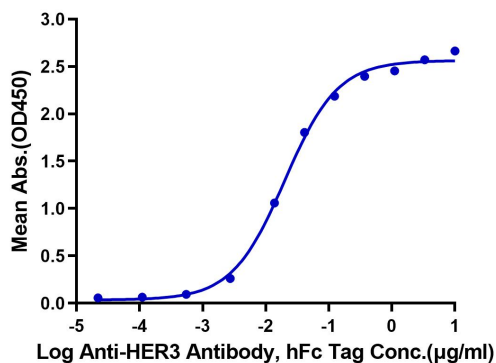
Cynomolgus/Rhesus macaque Her3, His Tag ELISA

0.1 μ g Cynomolgus/Rhesus macaque Her3, His Tag Per Well

Immobilized Cynomolgus/Rhesus macaque Her3, His Tag at 1 μ g/ml (100 μ l/well) on the plate. Dose response curve for Human NRG1 Beta 1, hFc Tag with the EC50 of 0.12 μ g/ml determined by ELISA (QC Test).

ELISA Data

Cynomolgus/Rhesus macaque Her3, His Tag ELISA

0.05 μ g Cynomolgus/Rhesus macaque Her3,His Tag Per Well

Immobilized Cynomolgus/Rhesus macaque Her3, His Tag at 0.5 μ g/ml (100 μ l/well) on the plate. Dose response curve for Anti-HER3 Antibody, hFc Tag with the EC50 of 20.1ng/ml determined by ELISA.